

POWER QUALITY ANALYZER PQM-700



Operation:

-20...55°C

 CAT IV
300V

 IP 65

**ANALYZER MEASURES
AND RECORDS ACCORDING
TO THE IEC 61000-4-30**

**CLASS S
STANDARD**

- power to the analyzer is supplied from tested mains (internal power supply) and is used in all types of networks from 64 V to 760 V, with particular emphasis on measurements at low voltage poles, due to the ease of connection.
- has an independent power supply socket, especially suited for voltage measurements for transformers and DC circuits.
- built-in real-time clock

Possible measurements:

- Measurements according to EN 50160,
- Voltage L1, L2, L3,
 - average, minimum, maximum and instantaneous values, range to 760 V, ability to work with voltage transformers,
- Current L1, L2, L3, N (four inputs),
 - average, minimum, maximum and instantaneous values, measurement current with range to 3 kA (depends on used clamp), ability to work with current transformers,
- Crest factor for voltage and current,
- Frequency from 40 Hz to 70 Hz ,
- Active, reactive, distortion, apparent power, including the type of reactive power (capacitive, inductive),
- Power recording:
 - Budeanu method,
 - IEEE 1459,
- Active, reactive, apparent energy,
- Power factor, $\cos\phi$, $\text{tg}\phi$,
- Up to 40th harmonics for voltage and current,
- Total Harmonic Distortion (THD) for voltage and current,
- Short-term (P_{ST}) and long-term (P_{LT}) flicker,
- Unbalance of voltage and current,
- Current and voltage events registration including waveforms and RMS graphs half period,
- **ANALYZER MEASURES AND RECORDS ACCORDING TO THE IEC 61000-4-30 CLASS S STANDARD.**

Sonel S.A.
Wokulskiego 11
58-100 Świdnica, PL
tel. +48 74 85 83 860
fax +48 74 85 83 809

export@sonel.pl
www.sonel.pl

The device is designed to work with networks:

- with nominal frequency 50/60Hz,
- with nominal voltage:
64/110 V; 110/190V; 115/200V; 127/220V; 220/380V;
230/400V; 240/415V; 254/440V; 290/500 V; 400/690V.
- DC network

Supported networks:

- single-phase,
- two-phase with common N conductor,
- three-phase star connection with and without N conductor,
- three-phase delta.

Parameters of analyzer PQM-700:

Parameter		Measurement range	Max. resolution	Accuracy
Alternating voltage (TRMS)	—	0.0...760 V	0.01 % U_n	$\pm 0.5\% U_n$
Crest factor	Voltage	1.00...10.00 (≤ 1.65 for 690 V voltage)	0.01	$\pm 5\%$
	current	1.00...10.00 ($\leq 3,6 I_{nom}$)	0.01	$\pm 5\%$ m.v.
Alternating current TRMS	—	depending on clamp*	0.01% of nominal range	$\pm 1\%$ of nominal range (error does not account for clamp error)
Frequency	—	40.00...70.00 Hz	0.01Hz	± 0.05 Hz
Active, reactive, apparent and distortion power	—	depending on configuration (transformers, clamp)	up to four decimal places	depending on configuration (transformers, clamp)
Active, reactive apparent energy	—	depending on configuration (transformers, clamp)	up to four decimal places	as power error
cos ϕ and power factor (PF)	—	0.00...1,00	0.01	± 0.03
tg ϕ	—	0.00...10.00	0.01	depends on active and reactive power error
Harmonics and interharmonics	Voltage	as for alternating voltage True RMS	as for alternating voltage True RMS	$\pm 5\% U_n$ for $U_n \geq 1\% U_n$ $\pm 0.05\% U_n$ for $U_n < 1\% U_n$
	Current	as for alternating voltage True RMS	as for alternating voltage True RMS	$\pm 5\% I_n$ for $I_n \geq 3\% I_n$ $\pm 0.15\% I_n$ for $I_n < 3\% I_n$
THD	Voltage	0.0..100.0%	0.1%	$\pm 5\%$
	Current	(in regards to the rms value)		$\pm 5\%$
Flicker severity P_{ST} , P_{LT}	—	0.40...10.00	0.01	$\pm 10\%$
Voltage asymmetry	Voltage and current	0.0...10.0%	0.1%	$\pm 0.3\%$ (absolute error)

*Clamp F-1A, F-2A, F-3A: 0..3000A (10000A_{p-p}) *Clamp C-4A: 0..1000A (3600A_{p-p}) *Clamp C-5A: 0..1000A (3600A_{p-p}) *Clamp C-6A: 0..10A (36A_{p-p}) (without current transformers) Clamp C-7A: 0..100 A (360A_{p-p})

Standard accessories:

- Test leads 2.2 m; 7 pcs (permanent),
- "Crocodile" clip K01; black; 3 pcs
- "Crocodile" clip K02; blue
- "Crocodile" clip K02; red; 2 pcs
- USB cable
- Power supply plug (L1 and N)
- Straps for PQM, 2 pcs

- Carrying case
- Fasteners and bands for mounting the analyzer on a pole; 2 pcs
- DIN Rail Mounting Clip (ISO) (3 - elements)
- Magnetic voltage adapter (4 pcs)
- **WAPRZUSB** - Sone! Analysis software
- **WAADAAZ1** - Built-in rechargeable battery
- instruction manual, calibration certificate

WAFUTL5
WAPOZUCH4
WAPOZUCH3
WAADAUMAGKPL

Additional accessories:

- Carrying case for clamps
- AC line splitter AC-16
- Hard carrying case,

- **WAWALL2** - Rechargeable Li-Ion battery,
- **WAADAAC16** - Voltage Adapter with M4/M6 thread (5 pcs)
- **WAWALXL4** - Magnetic holder for PQM
- Clamps

WAAKU11
WAADAM4M6
WAPOZUCH5



Clamp	C-4A	C-5A	C-6A	C-7A	F-1A	F-2A	F-3A
INDEX	WACEGC4AOKR	WACEGC5AOKR	WACEGC6AOKR	WACEGC7AOKR	WACEGF1AOKR	WACEGF2AOKR	WACEGF3AOKR
Rated current	1000A AC	1000A AC 1400A DC	10A AC	100 A AC		3000A AC	
Max. overload current	1200A AC	1000A AC 3000A DC	20A AC	100 A AC		10kA AC	
Minimal measurable current	100mA	500mA	10mA	20 mA		1A	
Frequency	30Hz...10kHz	DC...5kHz	40Hz...10kHz	40 Hz...1 kHz		40Hz...10kHz	
Input signal level	1mV / 1A	1mV / 1A	100mV / 1A	500 mV / 1A		38.8 μ V / 1A	
Max. diameter of measured cord	52mm	39mm	20mm	24 mm	360mm	235mm	120mm
Minimal basic accuracy	$\leq 0.5\%$	$\leq 1.5\%$	$\leq 1\%$	0,5%		1%	
Battery power supply	—	+	—	—		—	
Lead length	2.2m	2.2m	2.2m	3 m		2.2m	
Measurement category	IV 300V	IV 300V	IV 300V	III 300 V		IV 600V	

Sonel Analysis 2.0

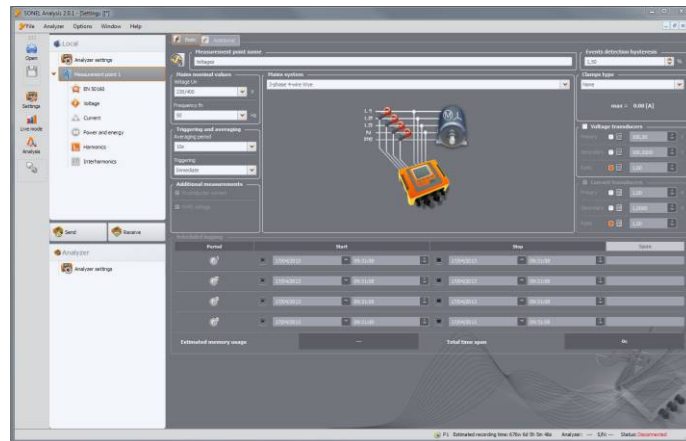
„SONEL Analysis” software is an application used to work with PQM-700 power quality analyzer. It enables:

- analyzer configuration,
- reading data from the analyzer,
- network parameters check in real time,
- data deleting in the analyzer,
- data presentation in tables,
- data presentation in diagrams,
- data analysis according to EN 50160 or according to user defined conditions,
- independent service of multiple analyzers,
- software upgrade through the Internet.

Analyzer configuration

The software enables configuration of all analyzer's parameters. The configuraton is made on the PC computer and later transferred to the analyzer. The configuration settings can be stored on hard drive or other data storage devices to be used later. The software enables the configuration of:

- analyzer time settings,
- keyboard lock,
- averaging time setting,
- choice of current and voltage transformers,
- trigger mode choice (immediately, after an event or according to the scheduler),
- choice of clamp's type, setting of additional parameters registration in N channel,
- choice of network type, for which the analyzer will be used.



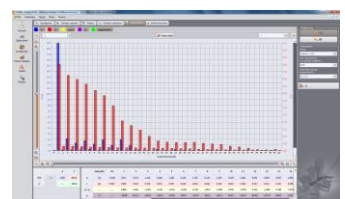
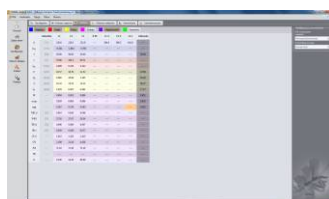
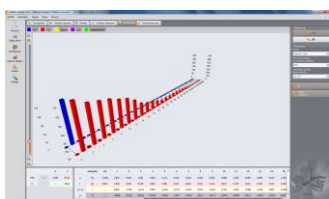
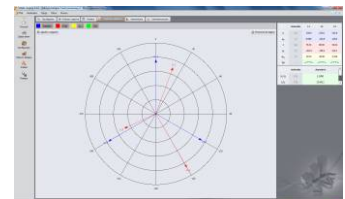
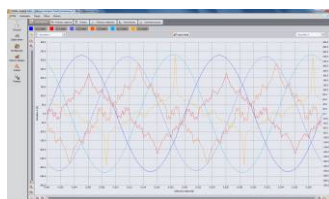
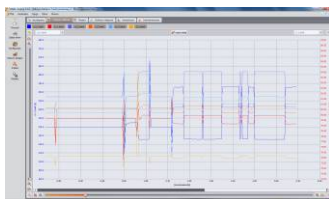
With Sonel Analysis software the following settings can be made:

- whether the analyzer shall work according to EN 50160 or according to user defined conditions,
- for each registration user can define, which network parameters shall be registered,
- for each parameter user can define whether the analyzer shall register average, minimum, maximum or instantaneous values,
- the limits beyond which the analyzer will record the event can be defined.

Live mode

“SONEL Analysis” software enables reading of selected parameters and their graphic presentation in real time. These parameters are measured independently of the registration saved on the memory card. User can check:

- voltage and current diagrams (oscilloscope),
- diagrams of voltage and current in time function,
- scope phasor,
- different parameters values,
- harmonics.

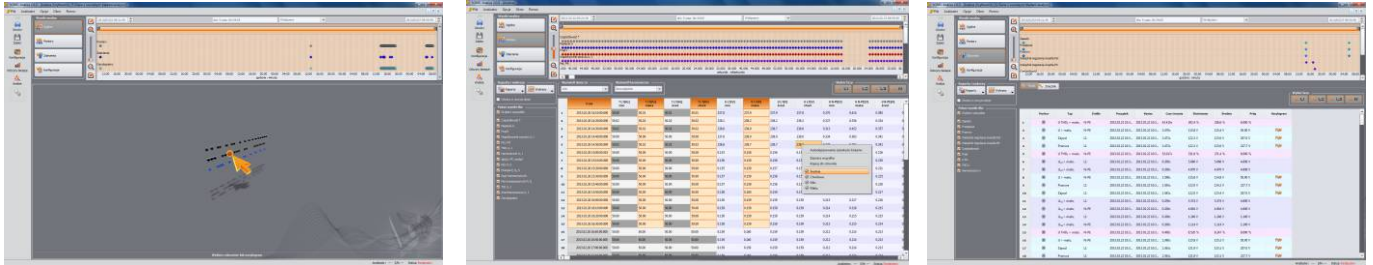


Data analysis

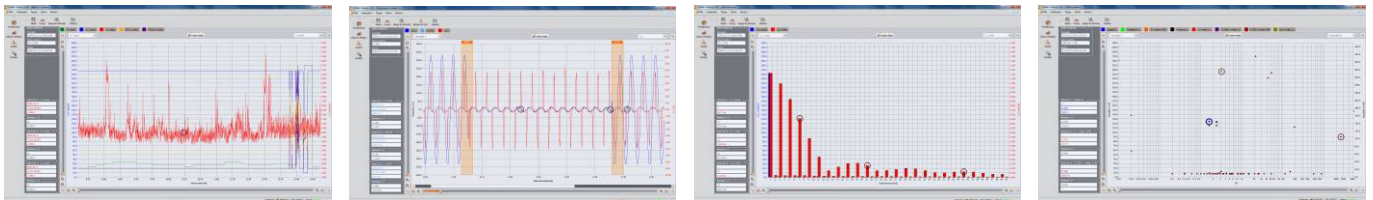
With "SONEL Analysis" software user can read data stored on the memory card and analyze them. Data from the analyzer can be stored on hard drive and be used later. This feature enables data archiving.

The user can analyze the data from the device. There is a choice of:

- **General** – all data are shown with dots (Measurements, Events and Waveforms),
- **Measurements** – all measured values registered in averaging time are shown in table (voltage, frequency, etc.),
- **Events** – all detected events are shown in table (dips, swells, interruptions, etc.),
- **Configuration** – all data settings are shown.



The software enables different types of diagrams, which show in a simple way the registered data:



- **Time diagram** – graphs of indicated parameters in time function,
- **Waveforms** – graphs of instantaneous voltage and current during an event or at the end of averaging time,
- **Harmonics diagram** – bar graph showing harmonics from 1 to 40,
- **Value/Time diagram** – graph of events' duration time.

With data from the analyzer user can prepare reports, which can be saved on the hard drive in PDF, HTML, CSV or TXT files. The software enable to prepare the report according to EN 50160 standard.

Optionel accessories:

Voltage Adapter with M4/M6 thread used to connect voltage test leads to rail connectors in switchgear
- 5 pcs - **WAADAM4M6**

